

PARTNER ONBOARDING PACKAGE

Welcome to WorkSafeNB's
network of care!

People.
Prevention.
Integrity.



INSIDE



GETTING TO KNOW US

[6](#)

About Us

[7](#)

Who We Serve

[8](#)

Our Commitment

PARTNERING WITH US

[12](#)

Recovery is a Team Effort

[13](#)

Onboarding Process

[14](#)

Meet your Consultants

[16](#)

Reports and Invoicing

[18](#)

Decision-Making Process

WEB RESOURCES

[22](#)

WorkSafeNB sites

[27](#)

MyServices and other Web Tools

APPENDIX

[31](#)

Terms and Acronyms

[33](#)

Quick Links

Welcome!

It's with great pleasure that we welcome you as a health care partner. We're excited to have you join our network of approved professionals who play a vital role in ensuring the health and well-being of New Brunswick' workers.

You're at the forefront, delivering essential rehabilitation and assessment services that allow for the return to work and improvement of lives of workers both at work and at home. Your expertise and commitment to client care contribute significantly to our mission: collaborate with all stakeholders to design, build and manage an effective continuum of safety and care.

In the coming weeks, we'll schedule a one-on-one session with you, where you'll learn more about us and have the opportunity to ask questions. Please use this onboarding package to prepare you for the session and serve as an ongoing resource.

We look forward to working with you!



Partners in service excellence

Message from our president and CEO



Welcome to the WorkSafeNB network of care providers. We look forward to collaborating with you to provide exceptional service to New Brunswick workers.

WorkSafeNB's values are accountability, collaboration and trust. We incorporate these values in all we do – from our initial meeting with you to ongoing support. We encourage open communication, the sharing of knowledge, evidence-based approaches, and the continuous pursuit of excellence in care.

Together, we will have a meaningful impact on the lives of New Brunswick workers and their families as they navigate recovery.

As a valued partner, we wish to set you up for success – with knowledge, tools and connections to help you best treat and support injured workers.

Please reach out to one of our skilled health care consultants at any time for guidance and help. On behalf of WorkSafeNB, I thank you for your diligence and commitment to quality care and service.

A handwritten signature in black ink, appearing to read 'Tim Petersen'.

Tim Petersen, President and CEO



GETTING TO KNOW US

People.
Prevention.
Integrity.



GETTING TO KNOW US

About us

WorkSafeNB is a Crown corporation committed to promoting healthy and safe workplaces in New Brunswick. While our primary objective is to prevent workplace injuries and occupational disease, we provide comprehensive rehabilitation services and wage-loss replacement when these do occur.



Our founding principles

In 1918, New Brunswick's workers' compensation system was established based upon principles developed five years earlier by Sir William Meredith, a former Chief Justice of Ontario.

The development of the Meredith Principles achieved a historic compromise in which employers fund the workers' compensation system and collectively share liability if, and when, workers are injured.

In return, injured workers receive wage-loss compensation and medical benefits while they recover from a workplace injury.

In accepting workers' compensation benefits, injured workers cannot sue their employers. The Meredith Principles became the basis for workers' compensation systems across Canada and remain so today.

The Meredith Principles are based on

- 1. No-fault compensation**
- 2. Security of benefits**
- 3. Collective liability**
- 4. Independent administration**
- 5. Exclusive jurisdiction**



GETTING TO KNOW US

Who we serve



At WorkSafeNB, we care about New Brunswickers and their safety. We treat each worker, each employer, each claim and each workplace incident and inspection with the utmost care.



The work we do is important – and so are the people we do it for. We help workers injured on the job safely recover. We help employers make workplaces safe. And we strive to provide our clients – whether they are workers or employers – exceptional service.

HELPING WORKERS RECOVER

Under the *Workers' Compensation Act*, with your help, we support workers recovering from workplace injury or illness. We ensure they get the medical treatment they need when they need it, and the financial benefits to help protect them and their family from the economic impact of a workplace injury or illness.



*2022 data

GETTING TO KNOW US

Our commitment

WorkSafeNB is committed to service excellence. For injured workers of New Brunswick, this means timely and quality care and service.

We focus on early and safe return to work, best supporting both New Brunswick workers and workplaces.

Workers stay connected to colleagues, maintain routines, and keep a sense of value and identity. They focus on what they *can do*, not what they *can't*.

Employers maintain a valuable employee. There's less disruption to the workplace and they build on a culture of trust and support, improving its productivity.

Working with partners like you, we can support workers and employers in this goal.

VISION

Making New Brunswick the safest place to work.

MISSION

Collaborate with all stakeholders to design, build, and manage an effective continuum of safety and care.

VALUES

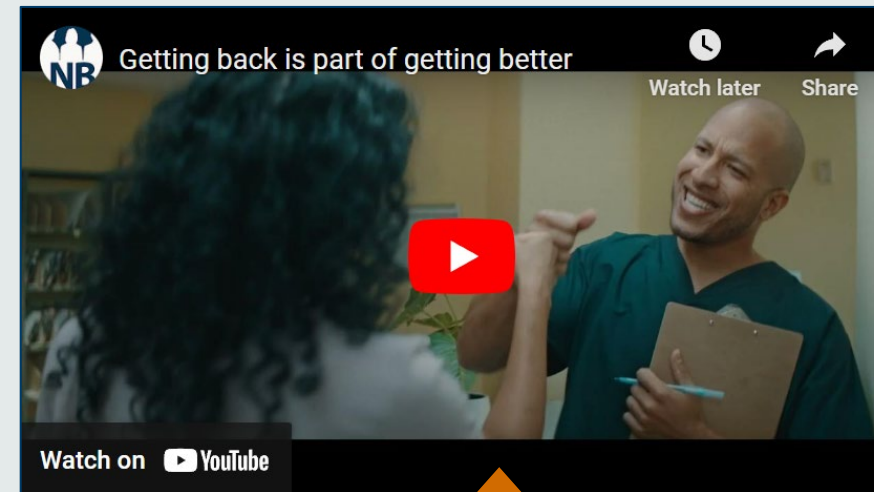
Accountability | Collaboration | Trust

WorkSafeNB aims to make our province the safest place to work. Three core values define us: accountability, collaboration and trust.

GETTING TO KNOW US

Every day matters

When it comes to worker recovery, **every day matters**. WorkSafeNB takes an early and evidence-based approach to treatment, minimizing the potential for long-term disabilities and their impacts. **Returning to work is returning to life!** To learn more, please explore [WorkSafeNB's online resources](#), as well as information from other organizations that specialize in occupational medicine best practices.



Click here!



Link between work and health:



There is substantial evidence to support the positive link between work and health (physical, mental and social health). ... Absence from work contributes to declining health, slower recovery times, and longer duration of disability.



- Occupational Medicine Specialists of Canada



GETTING TO KNOW US

Our early, proactive approach

WorkSafeNB takes a proactive approach to disability prevention, and we collaborate with you to make that happen.

We focus on the proven strategy of early and individualized support that keeps the worker at or connected to the workplace, when possible.

Our Stay at Work Service and Early Intervention teams provide customized care from the onset of injury or illness.

Our *Care Closer to Home* model ensures our workers receive care in or near their community – when possible – allowing them to stay connected to important supports of family and friends.



Among our strategies:

- [Early Intervention team](#)
- [Stay at Work team](#)
- [Direct Referral to Physiotherapy Program](#)*
- [SUCCEED](#)*
- Industry-specific case management teams
- Strategic partner relationship management

* Offer access to treatment before adjudication, expediting recovery.

PARTNERING WITH US

People.
Prevention.
Integrity.



PARTNERING WITH US

Recovery is a team effort

Making safe and sustainable work arrangements for recovering workers takes teamwork. Workers, employers and health care partners all have important contributions to make to shift the focus from what a person can't do to what they can do at the workplace.

Your part:



- Provide timely, evidence-based treatment supporting the worker's recovery.
- Support injured workers in understanding the positive effects of timely return to employment.
- Communicate and collaborate with all care partners, including the employer and WorkSafeNB, in the worker's recovery.



- Work closely with the claim manager to facilitate the worker's recovery.
- Actively participate in the stay-at-work or return-to-work program, such as suggesting ideas on how to adapt for safe job duties.



PARTNERING WITH US

Onboarding process

Checklist

- 1 Receive Onboarding Package**
 Receive an onboarding package with discipline-specific information.
- 2 Review Onboarding Materials**
 Review the materials to gain an initial understanding of WorkSafeNB and the provider network.
- 3 Identify Primary Contact**
 Determine your health care consultant partner (the person who shared the onboarding package with you) and note contact information.
- 4 Identify Outstanding Questions**
 Identify any additional questions you may have after reviewing the onboarding materials.
- 5 Attend Orientation Session**
 At the orientation session your primary contact will walk you through any remaining discipline-specific information and answer any outstanding questions.
- 6 Schedule Initial Check-in**
 Before the three-month mark of being a WorkSafeNB partner, your primary contact will reach out to setup a check-in.
- 7 Attend Check-in**
 Ask any outstanding questions and receive feedback.

Onboarding timeline



Week 1	Month 1	Month 3	Month 6
Materials Review Receive the onboarding package, resources and guides, and other supporting materials.	Orientation Session Completion of a one-on-one orientation session led by a WorkSafeNB Health Care Consultant to provide guidance and answer questions.	Check-in An informal check-in from your WorkSafeNB Health Care Consultant to determine how you're progressing and provide an opportunity to answer questions and offer support.	Formal Review At the 6-month point, WorkSafeNB will conduct a review of your clients received to date to identify what is going well and what can benefit from improvement.

PARTNERING WITH US

Meet your consultants

WorkSafeNB is committed to supporting you! Our highly skilled health care consultants are your partners in ensuring the well-being and care of workers. Our consultants have thorough knowledge and practice in their respective discipline and understand the specific challenges faced by injured workers and the health care providers serving them.

See your discipline-specific section for your consultant and contact information or call 1 800 999-9775.



Justin Parsons
PT Consultant



Heather Forster
OT Consultant



Beth McCluskey Pelletier
PT Consultant

PARTNERING WITH US

When do I contact my consultant?

While you'll work primarily with the injured worker and the WorkSafeNB claim owner, our health care consultants provide an additional level of support. Here are some examples of times to contact your consultant to ensure effective communications and information sharing throughout our partnership.

“**We're here to help!**”

1

Change in business operations

- New services or personnel available (such as added expertise or capabilities)
- Services or personnel leaving or no longer available to WorkSafeNB clients
- Opening or closure of operating locations

2

Change in contact information

- Location or office move
- Email or mailing address change
- Phone number change

3

Need help when treating a WorkSafeNB client

- Questions or concerns on the client's rehabilitation plan
- Times where treatment is not yielding desired results and you recommend a new path or would like to explore options

PARTNERING WITH US

Timely reports

We put people first at every stage of recovery. **Timely and thorough reports** help us do this. It helps us make timely decisions, allowing workers to receive appropriate care when they need it. Please submit complete reports.

Open health care forms!

<https://www.worksafenb.ca/health-care/working-with-us/health-care-forms/>

← Click here!

Submit through **MyServices**

Need help?

 1 800 999-9775

Other submission options: fax (1 888 629-4722) and mail (WorkSafeNB, 1 Portland St., PO Box 160, Saint John, NB E2L 3X9).



PARTNERING WITH US

Invoicing us

Bill according to provider fees* set by WorkSafeNB.

Invoices must include:

- ✓ Client name
- ✓ Claim number
- ✓ Service provider / clinic name
- ✓ Service delivered description
- ✓ Date(s) of each intervention

Send invoices through **MyServices**

Need help?

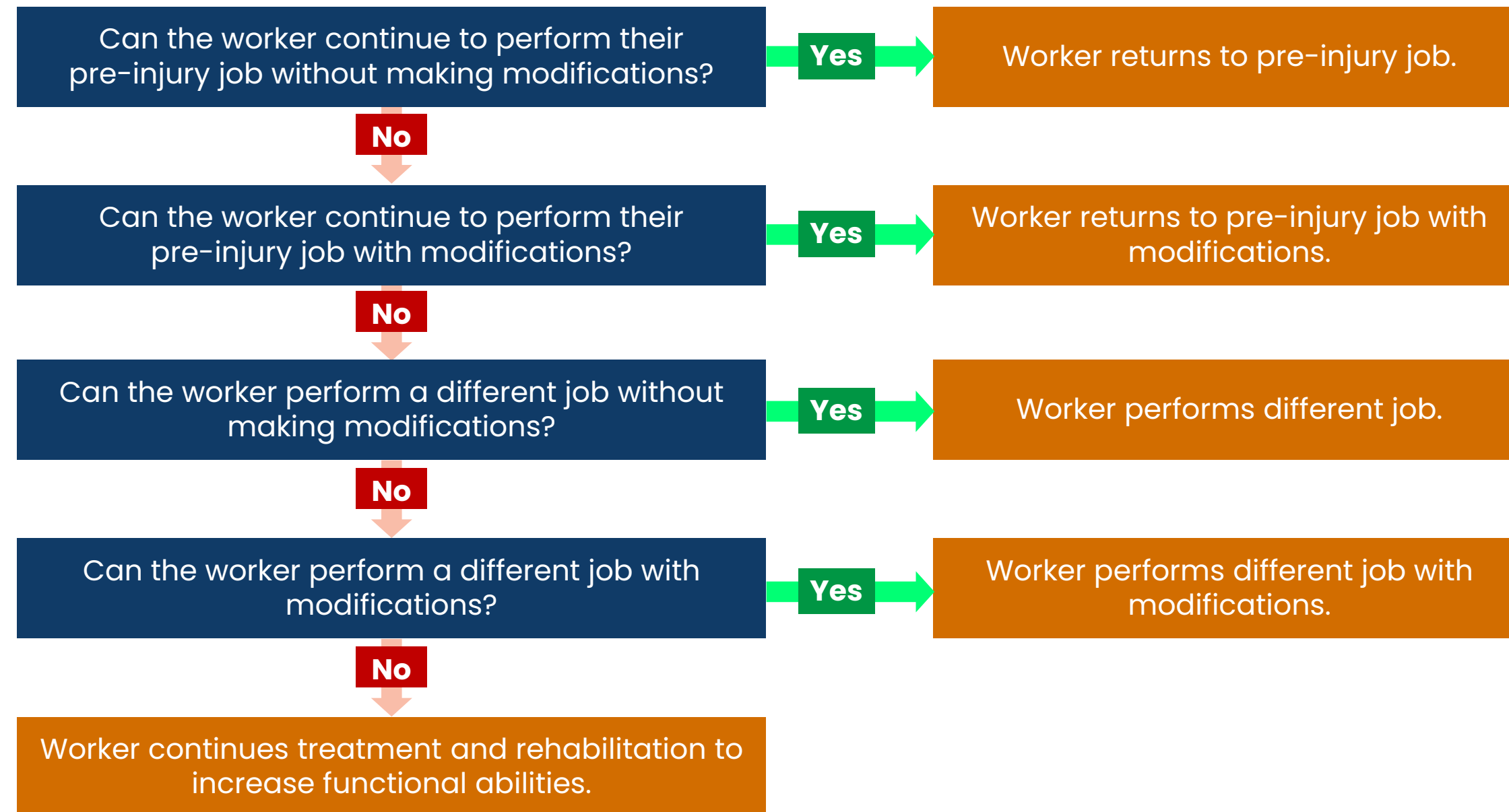
 1 800 999-9775

* See your contract.



Decision-making process

A worker has an injury. Now what?



PARTNERING WITH US

Questions

WorkSafeNB is here to work with you. If you have recommendations or concerns, please reach out.

Don't agree with a WorkSafeNB decision or direction?

Speak with the WorkSafeNB claim manager or health care consultant about your concern.

What happens if there is a complaint?

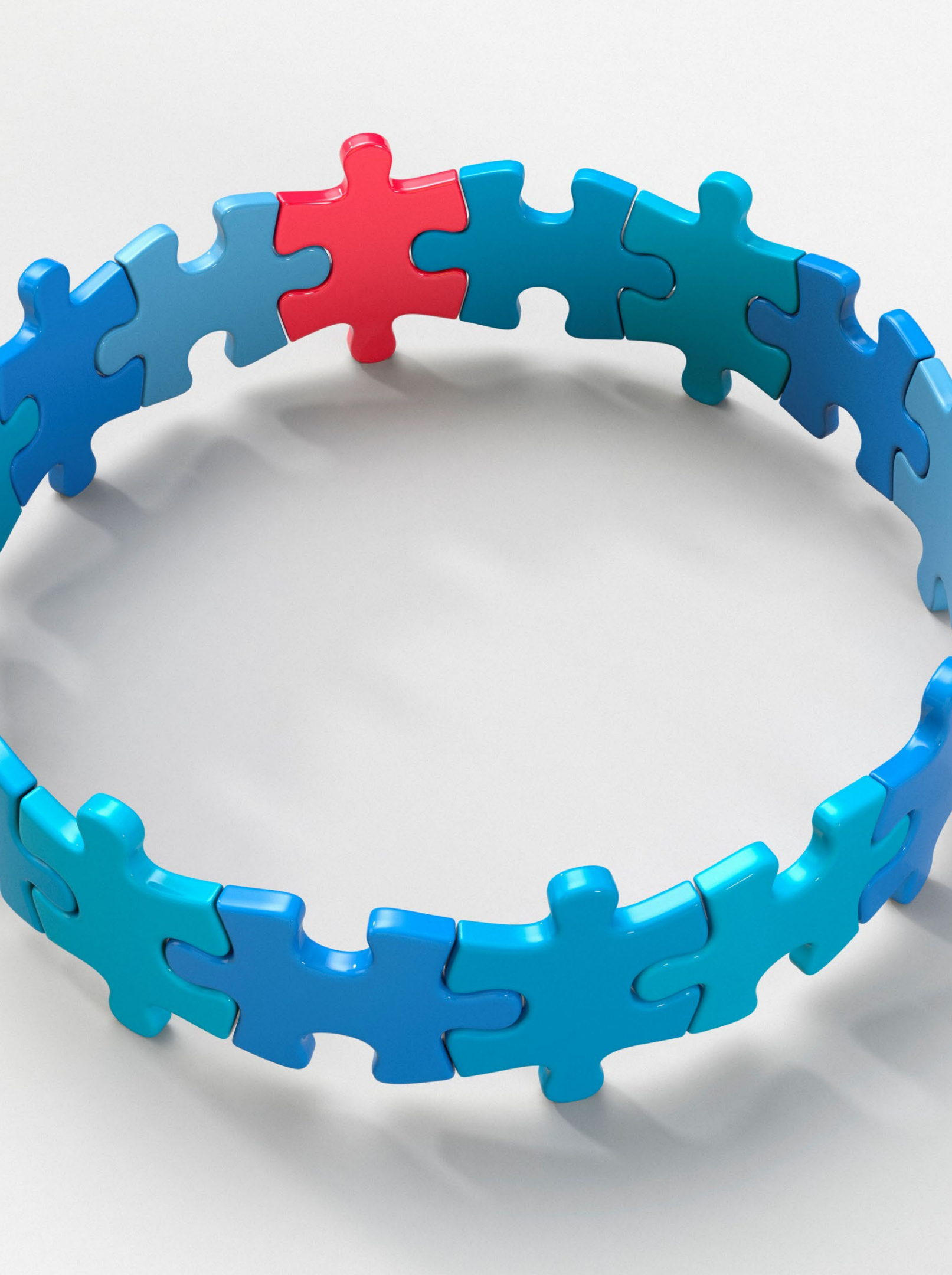
We take client care seriously. Any concern or complaint to WorkSafeNB on a provider's service is carefully investigated by our team. This would include a review of clinical information and interviews with you, the clinic owner (if applicable), the worker and WorkSafeNB staff.

Once completed, we document the investigation in writing and share it with the clinic owner. Clinical concerns may result in clinic probation or de-listing of the clinic as an approved provider.

If the complaint is substantiated and may affect public protection, the complaint is forwarded in writing to the provider's oversight body (example: College of Physiotherapists of New Brunswick).

Call us: 1 800 999-9775





PARTNERING WITH US

In summary

Through this partnership you'll:

- Work collaboratively with us to ensure that injured workers receive appropriate treatment.
- Recognize and champion the importance of early and safe return to work for injured workers.
- Support and facilitate workers and their employers in a safe stay-at-work or early return-to-work program.
- Submit quality and timely clinical reports.

Our skilled consultants are here to help and support you.

[Getting back is part of getting better.](#)



Click here!



WEB RESOURCES

People.
Prevention.
Integrity.



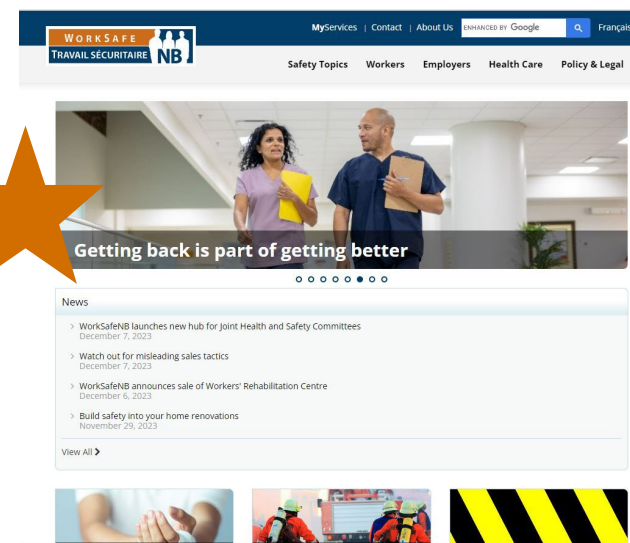
WEB RESOURCES

WorkSafeNB sites

Additional resources a click away

WorkSafeNB provides helpful resources at your fingertips. Four sites (plus one app) help us support workers, employers and health care partners in our province. Starred sites are particularly helpful for health care partners. Please take the time to review each site.

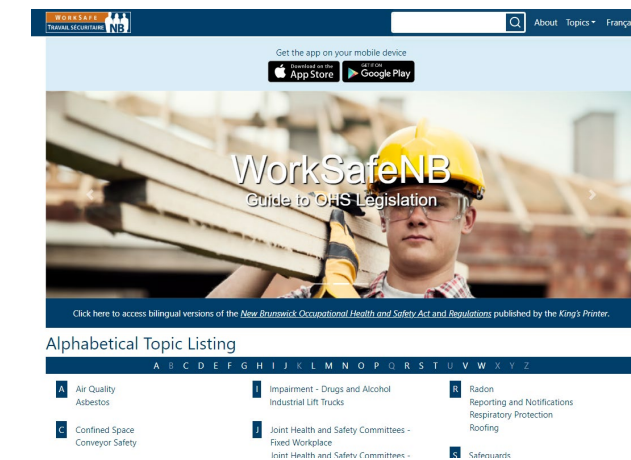
worksafenb.ca



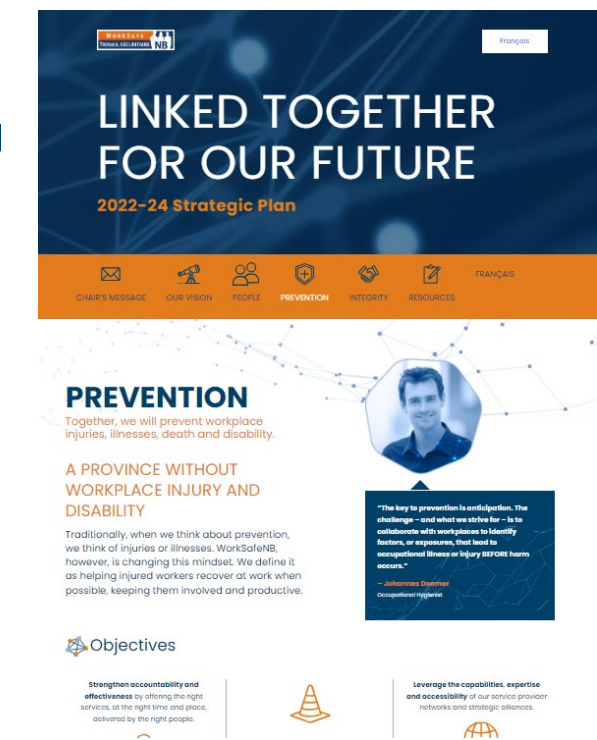
Working to Well



WorkSafeNB Guide to Occupational Health and Safety Legislation



Strategic Plan



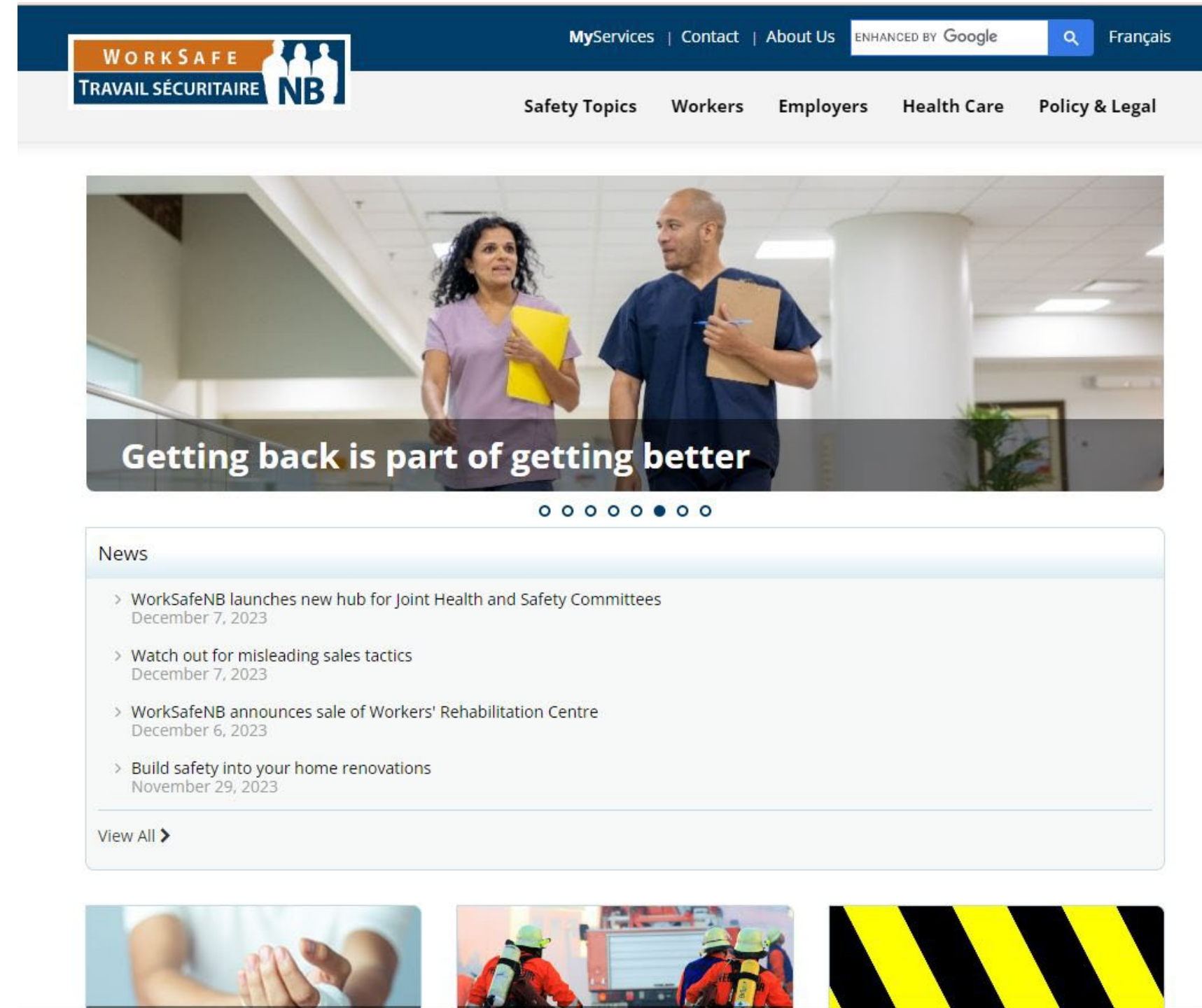
Click each image to visit site!

WEB RESOURCES

worksafenb.ca



Worksafenb.ca is our central hub for information. The Health Care section, in particular, hosts treatment and recovery resources, forms and news specific to health care partners.





Working to Well helps injured workers navigate the recovery process. It describes how the four partners – the health care provider, worker, employer and WorkSafeNB – work together for their good.. It shares video stories of other injured workers and tips for their recovery.

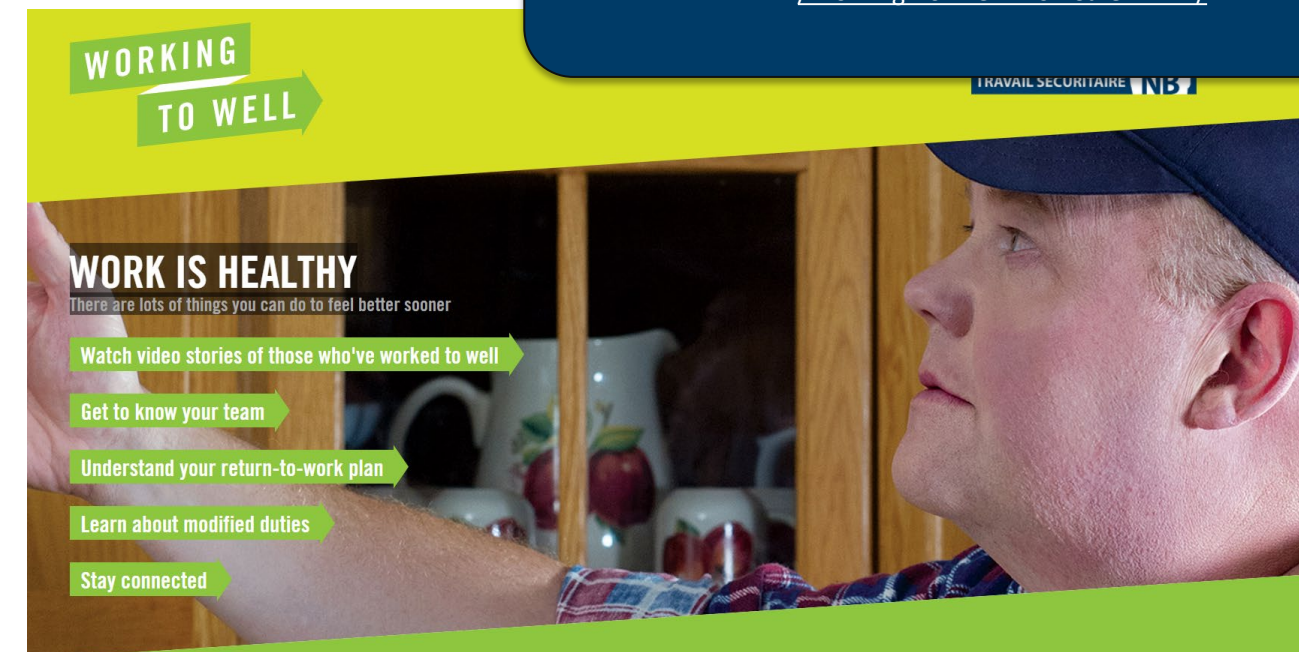
HEALTH CARE PROVIDER

Your health care provider plays a vital role in formulating a plan for your successful return-to-work. They also understand the importance of helping you stay active and connected. Depending on your injury, your health care providers may include your family physician or nurse practitioner, surgeon, physiotherapist, psychologist, and occupational therapist.

Learn more about all the ways your health care provider will work with you on your journey to recovery.

[READ MORE](#)

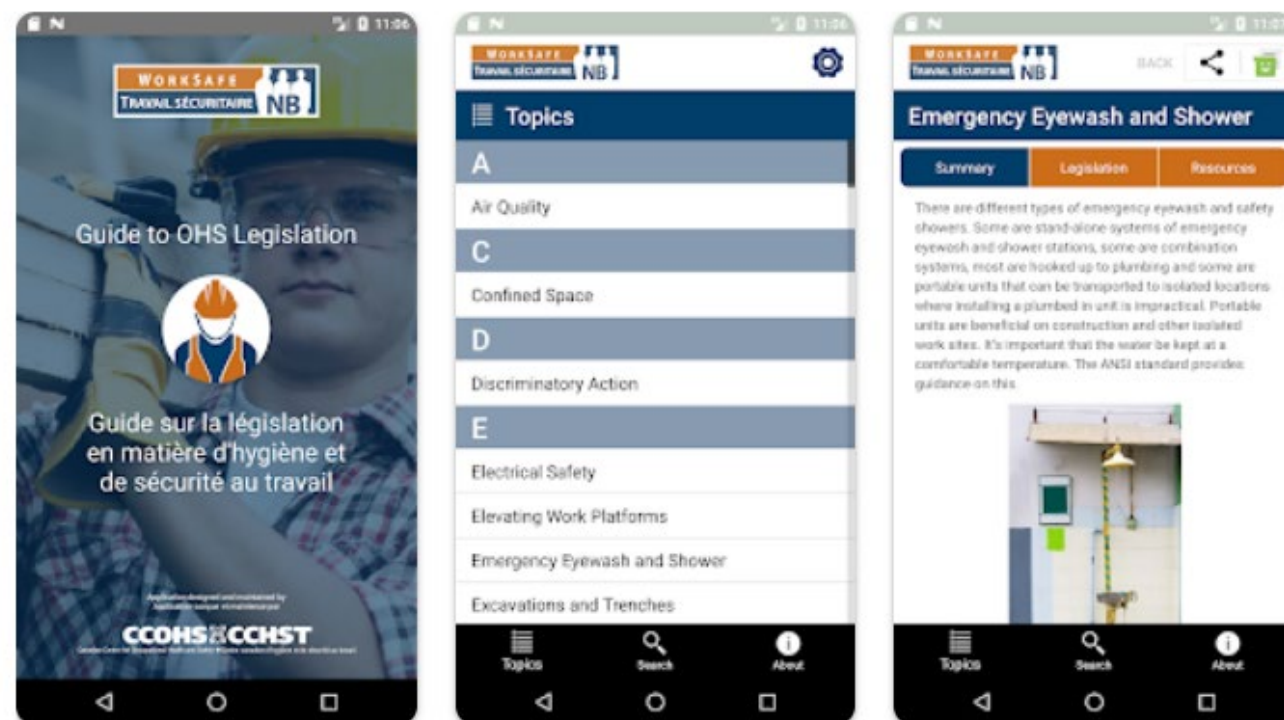
Open the e-book!
<https://cloud.3dissue.com/164281/164545/236334>
</Working-To-Well-WorkSafeNB-EN/>



WEB RESOURCES

WorkSafeNB Guide to Occupational Health and Safety Legislation

This website and app helps guide employers and workers on more than 60 workplace health and safety topics. Resources include legislative requirements, interpretations, templates and checklists. Topics are added annually.



Topic Listing

A B C D E F G H I J K L M N O P Q R S T U V W X Y Z

- I** Impairment - Drugs and Alcohol
Industrial Lift Trucks
- J** Joint Health and Safety Committees - Fixed Workplace
Joint Health and Safety Committees - Project Sites
- L** Laboratory Safety
Ladders
- R** Radon
Reporting and Notifications
Respiratory Protection
Roofing
- S** Safeguards
Safety Policy
Sanitation and Accommodations
Scaffolding
Supervision

<https://ohsguide.worksafenb.ca/index.html>

WEB RESOURCES

Strategic plan

People-prevention-integrity.ca is WorkSafeNB's strategic plan website. Look here to read about our vision, goals and objectives. Under resources, you'll find specific plans and initiatives for each year, many related to health care and partnership endeavours. Among the prevention focus area, we discuss our goal for disability prevention.

A PROVINCE WITHOUT WORKPLACE INJURY AND DISABILITY

Traditionally, when we think about prevention, we think of injuries or illnesses. WorkSafeNB, however, is changing this mindset. We define it as helping injured workers recover at work when possible, keeping them involved and productive.



Learn more about us!

2022-24 Strategic Plan

<https://people-prevention-integrity.ca/>

WEB RESOURCES

MyServices for health care providers

Accessible through worksafenb.ca, MyServices is a secure platform, where you submit claim information, such as reports and invoices, and communicate with WorkSafeNB claim managers and your health care consultant.

Use MyServices to:

- Email WorkSafeNB with questions or concerns
- Upload reports and invoices
- Check on invoice status
- View invoice and payment history

Register for your MyServices account!

Need help?



1 800 999-9775

Or click here!

MyServices: Reports and invoices

Send us claim-related documents such as reports, invoices, travel expense forms, copies of medical leave slips, etc. through your MyServices account.

- Documents must have information related to one claim
- Maximum 3 documents at one time.

SUBMIT DOCUMENTS

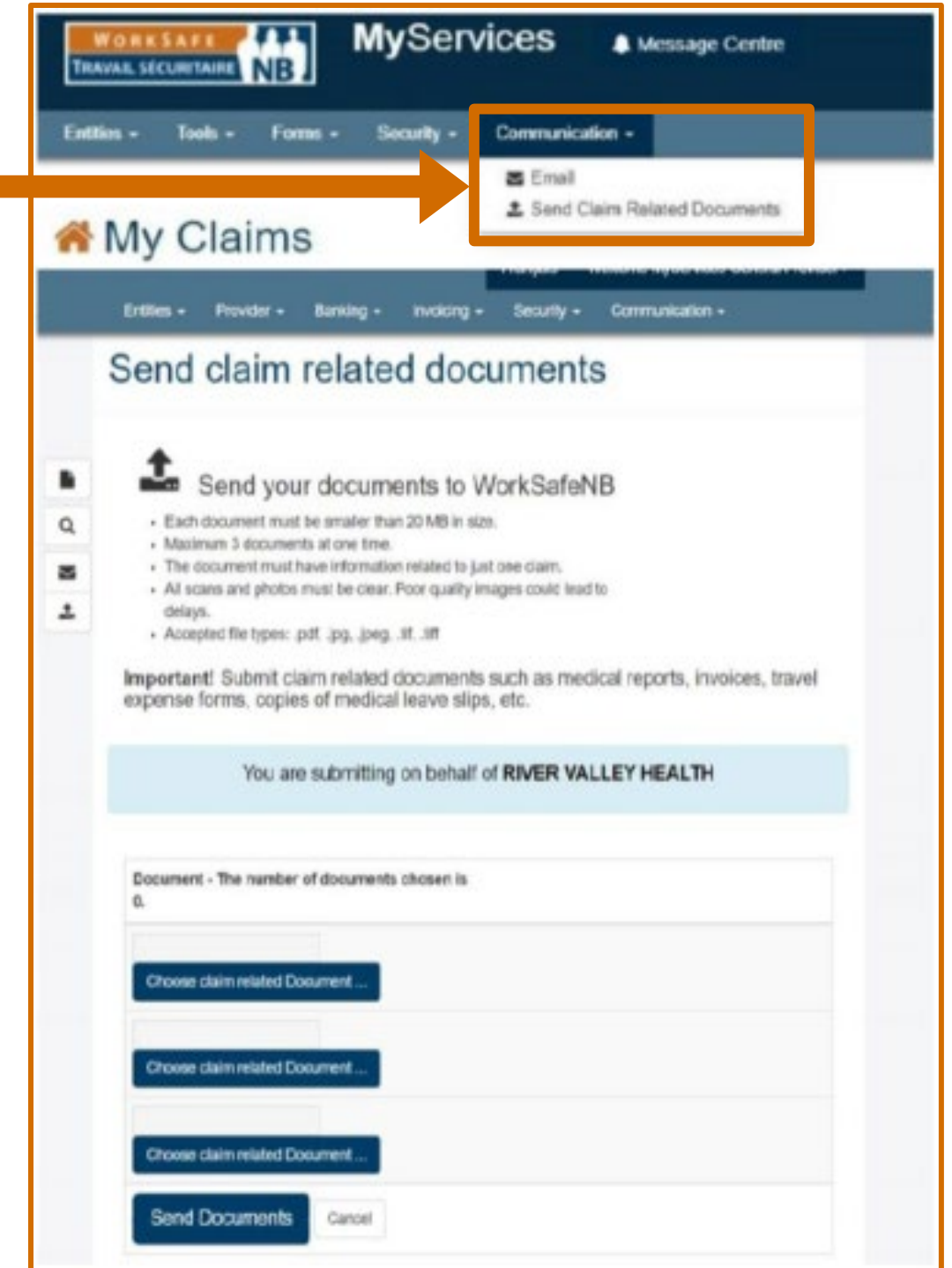
- Select “Send claim-related documents” under the “Communication” tab
- Upload the document

EMAIL US

- Select “Email” under the “Communication” tab
- Search by first or last name

Need help?

 1 800 999-9775



The screenshot shows the MyServices web portal interface. At the top, there is a navigation bar with 'WORKSAFE TRAVAIL SÉCURITAIRE NB' and 'MyServices' branding. Below this, a menu is open for the 'Communication' tab, showing options for 'Email' and 'Send Claims Related Documents'. The 'Send Claims Related Documents' option is highlighted with an orange box and an arrow pointing to the main content area. The main content area is titled 'Send claim related documents' and contains a section for 'Send your documents to WorkSafeNB'. This section lists requirements: documents must be smaller than 20 MB, a maximum of 3 documents at one time, documents must be related to one claim, and scans/photos must be clear. It also lists accepted file types: pdf, jpg, jpeg, .tif. An important note states: 'Submit claim related documents such as medical reports, invoices, travel expense forms, copies of medical leave slips, etc.' Below this, a light blue bar indicates 'You are submitting on behalf of RIVER VALLEY HEALTH'. The bottom part of the page shows a 'Document - The number of documents chosen is 0.' section with three 'Choose claim related Document ...' buttons and a 'Send Documents' button next to a 'Cancel' button.



WEB RESOURCES

Additional online tools

WorkSafeNB recommends several third-party sites for return-to-work or stay-at-work resources.

Canadian Centre for Occupational Health and Safety (CCOHS)

https://www.ccohs.ca/oshanswers/psychosocial/rtw/rtw_program.html

Institute for Work and Health

<https://www.iwh.on.ca/>

Well-Being at Work after Return to Work (RTW): A Systematic Review
(National Library of Medicine)

<https://www.ncbi.nlm.nih.gov/pmc/articles/PMC7602369/>

Choosing Wisely Canada: Occupational Medicine

<https://choosingwiselycanada.org/recommendation/occupational-medicine/>



APPENDIX

People.
Prevention.
Integrity.



APPENDIX

Terms and acronyms

Adjudication	Determination on whether an injury or illness meets the legal requirements for compensability under the <i>Workers' Compensation Act</i> or <i>Firefighters' Compensation Act</i> .	
Case manager (CM)	WorkSafeNB professional managing a claim under WorkSafeNB's case management team. The CM is your main contact for questions on an injured worker's claim, including treatment and return-to-work or stay-at-work plans.	
Claim owner	WorkSafeNB professional who manages a claim (case manager, adjudication specialist, LTD co-ordinator, etc..). This is your main contact for questions on an injured worker's claim, including treatment and return-to-work or stay-at-work plans.	
Direct care	Counselling/treatment directly applied to client (examples: virtual, telehealth or in-person).	
Direct Referral	Direct Referral to Physiotherapy Program in which workers can access WorkSafeNB-funded physiotherapy services before adjudication of an injury or illness. Employers of workers accessing the program must register and be approved for the program.	https://www.worksafenb.ca/employers/claims/direct-referral-to-physiotherapy-program/
E-Physio	MyServices portal specifically for physiotherapists.	
Ergo Eval	Evaluation of workplace ergonomics, which concerns the workers' physical and mental health and safety and the workplace comfortability and conduciveness.	
GRTW	Safe gradual return to work (may include gradual increase of time, tasks, etc. at the worksite).	

Terms and acronyms

WorkSafeNB health care consultant	WorkSafeNB professional who provides expertise and support to external health care partners in the same discipline.	
Indirect care	Counselling/treatment related to but not directly applied to the client (examples: reporting, meetings or travel time).	
JSA	Job site analysis (includes a review and assessment of a work environment)	
JSA Bank	Place where WorkSafeNB saves all job site analysis reports for future use/reference.	
MyServices	A secure online platform, where you can submit claim information, such as reports and invoices, and email WorkSafeNB claim managers and your health care consultant.	https://www.worksafenb.ca/myservices/#care_providers
RTW	Return to work	
SUCCEED	A six-week early intervention program supporting workers with a traumatic psychological injury.	https://www.worksafenb.ca/health-care/injuries-and-illnesses/tpi-recovery-information-for-workers/
Workers' Compensation (WC) Act	New Brunswick legislation that protects and supports workers who are hurt on the job. It ensures they get the medical treatment they need when they need it and the financial benefits to help protect them and their family from the economic impact of a workplace injury or illness.	https://laws.gnb.ca/en/tdm/cs/W-13//
Working to Well	Website, tools and campaign to help injured workers, employers and health care providers navigate the workplace injury journey. The initiative was developed and is practised in partnership with the four Atlantic provinces. It sets expectations and offers templates, videos, guides and tips.	https://workingtowellnb.ca/

Quick links

Forms	https://www.worksafenb.ca/health-care/working-with-us/health-care-forms/
E-News signup (WorkSafeNB newsletter)	https://landing.mailerlite.com/webforms/landing/y6nlg0
MyServices	https://www.worksafenb.ca/myservices/
Policies	https://www.worksafenb.ca/policy-and-legal/policy/view-our-policies/
Traumatic Psychological Injury Resource Centre	https://www.worksafenb.ca/health-care/injuries-and-illnesses/traumatic-psychological-injury-resource-centre/
Working to Well	https://workingtowellnb.ca/
WorkSafeNB site	https://www.worksafenb.ca/
WorkSafeNB's strategic plan	https://people-prevention-integrity.ca/
WorkSafeNB FAQs	https://www.worksafenb.ca/general-resources/frequently-asked-questions/

**THANK YOU
FOR HELPING
NEW BRUNSWICK
WORKERS GET
BETTER!**



QUESTIONS?

CONNECT WITH US AT
1 800 999-9775

People.
Prevention.
Integrity.

