

HAZARD ALERT

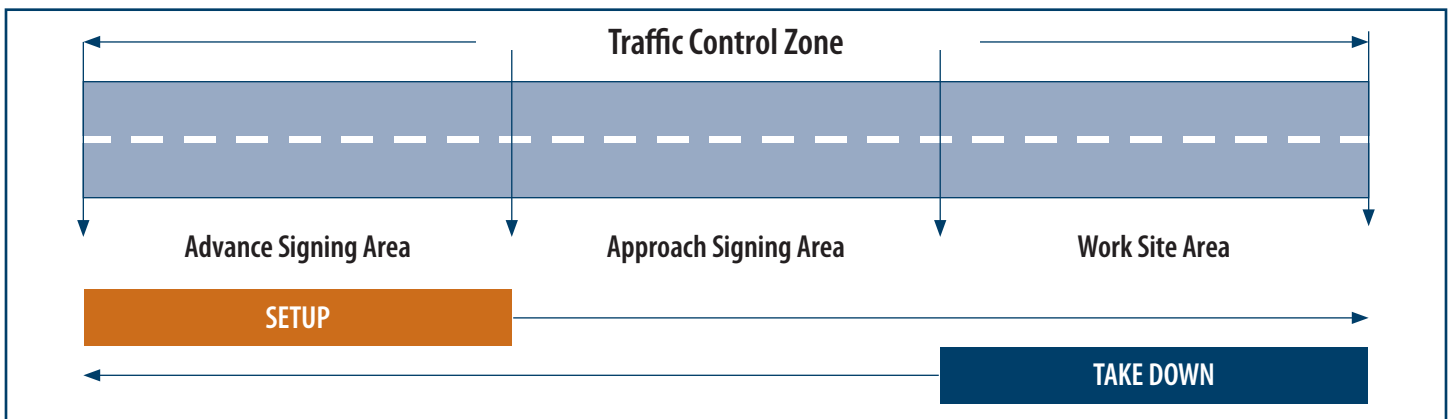
WORKERS KILLED ON NEW BRUNSWICK ROADS

- A Department of Transportation employee was killed instantly and two co-workers were injured when a transport truck crashed into their work area. The victim, part of a road repair crew, was placing orange traffic cones along the centre line of the Trans-Canada Highway when an oncoming transport truck struck him.
- An asphalt raker with 11 years experience died after being struck by a van. He was helping a co-worker clean up a small pile of debris near a resident's driveway at the end of a paving project. It was dusk on an overcast night. They were putting up the tailgate of their truck when the victim was struck by the van and was thrown and pinned under the rear wheels of the driver side of the truck.

Proper signage must always be present and visible in Traffic Control Zones to protect you, the worker, and to advise the motoring public of work being completed on or near the highway.

Follow these safe work practices to ensure the safety of employees in Traffic Control Zones:

- Employees involved in setting up and taking down traffic control devices must wear appropriate personal protective equipment (PPE), including a reflective safety vest.
- The vehicle used to transport the traffic control devices should be equipped with high visibility flashing lights.
- Employees setting up and taking down traffic control devices on or near roadways must exercise caution at all times. The setup and take down of traffic control devices must be done in a safe and consistent manner while complying with subsection 93(2) of *General Regulation 91-191* under the *Occupational Health and Safety Act*.



Once work is completed signs must be taken down in the opposite sequence.